

An aerial view of a city skyline at dusk. The sky is a deep blue with some light clouds. In the foreground, several modern skyscrapers with glass facades are visible, some with interior lights glowing. Two prominent towers in the center-right have greenery on their upper levels. A semi-transparent dark blue rectangular box is overlaid on the right side of the image, containing white text. The text reads "an introduction to" in a smaller font, followed by "mycondoplans" in a larger, bold font. Two horizontal white lines are positioned above and below the word "mycondoplans".

an introduction to

**mycondoplans**



## our service

A picture may be worth a thousand words, but context reveals meaning.

mycondoplans provides context to the vast amounts of information realtors need to wade through on a daily basis.

Via our seamlessly integrated service, realtors have instant access to a dedicated database of professional floor plans for attached residential properties.

At a glance statistics, valuations, and property layouts, along with building and site details, provide real context to property images and listing information, helping realtors to navigate the sea of data, and make more informed decisions quicker.

The service is provided via the association as a benefit to its members, with free registration and unlimited access and usage.



# key plans

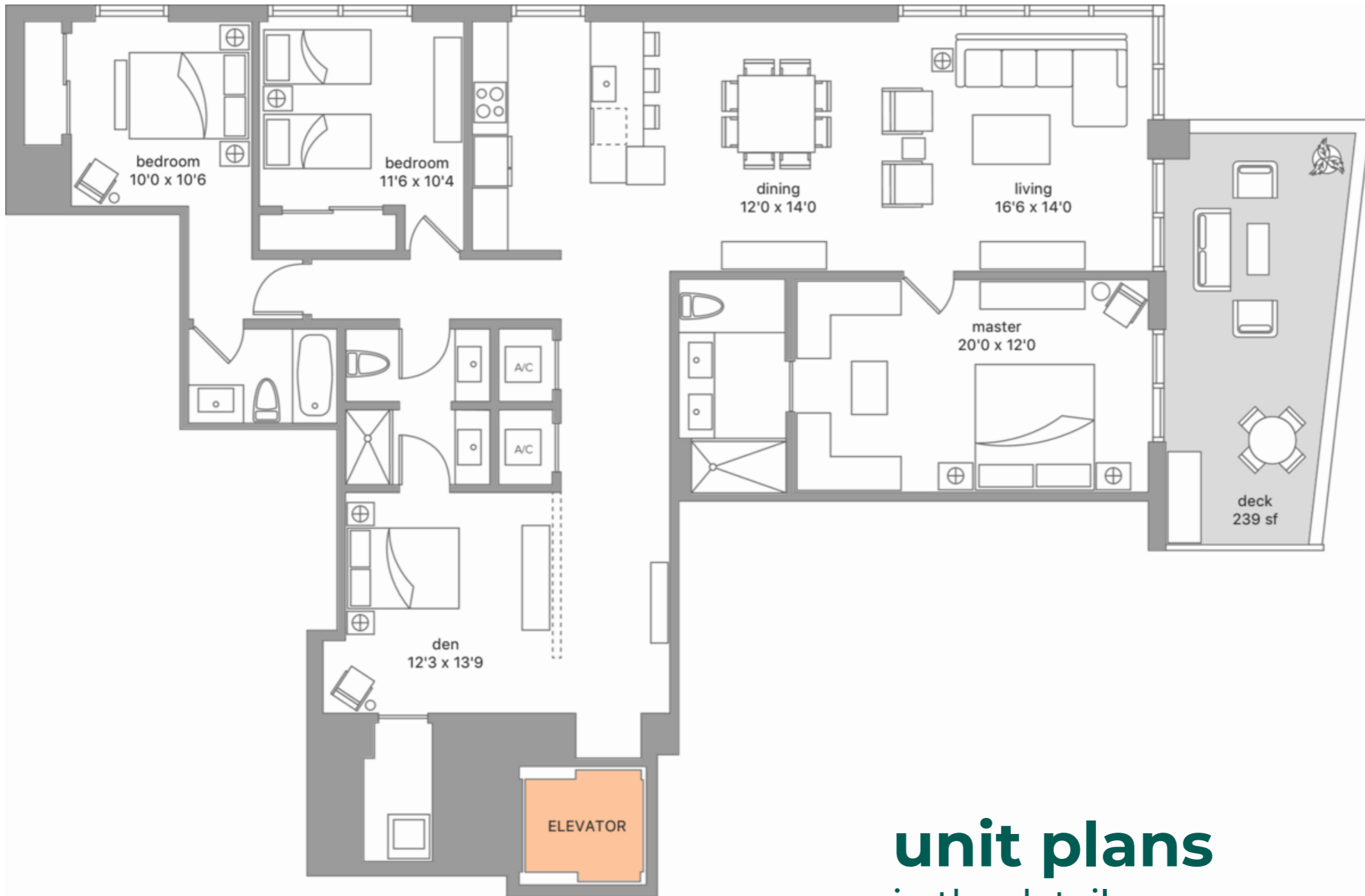
## what's in the box

Clear and concise, the design of our plans mask the complexity and analysis that goes into their creation. Don't let the simplicity fool you however, the plans are packed with pertinent information.

The specific unit is highlighted within the building key plan that is oriented and mapped to scale, making it easier to read, locate and understand the unit distribution.

The overall site and location details are mapped in their surroundings providing potential view and pertinent geographical information.





## unit plans in the details

Along side the site plan, our unit floor plans provide the all general details of the specified unit, including dimensions and layout.

1010 Brickell  
Brickell, Miami Dade, FL

1010 Brickell Ave  
Unit 01 Floor 14-48

Bed 3 Bath 3 Half 0 Levels 1  
Living Area 1755 sf 163 sm

Plan Type A



**our floor  
plans**  
greater than the sum  
of its parts

Combined onto a single printable page, along with the building and unit information, the final plan brings into focus a more complete understanding and analysis of the property.

Based on the specific floor, the plan layout, and the site plan geography, with neighbouring buildings, details such as unobstructed views, and the type of natural light, can be ascertained.



## base data

more than just condos

From the smallest Condos to the largest Town Home Communities, from recent to already established developments, we are always analyzing, mapping and adding residential attached properties to our ever growing and already extensive database.

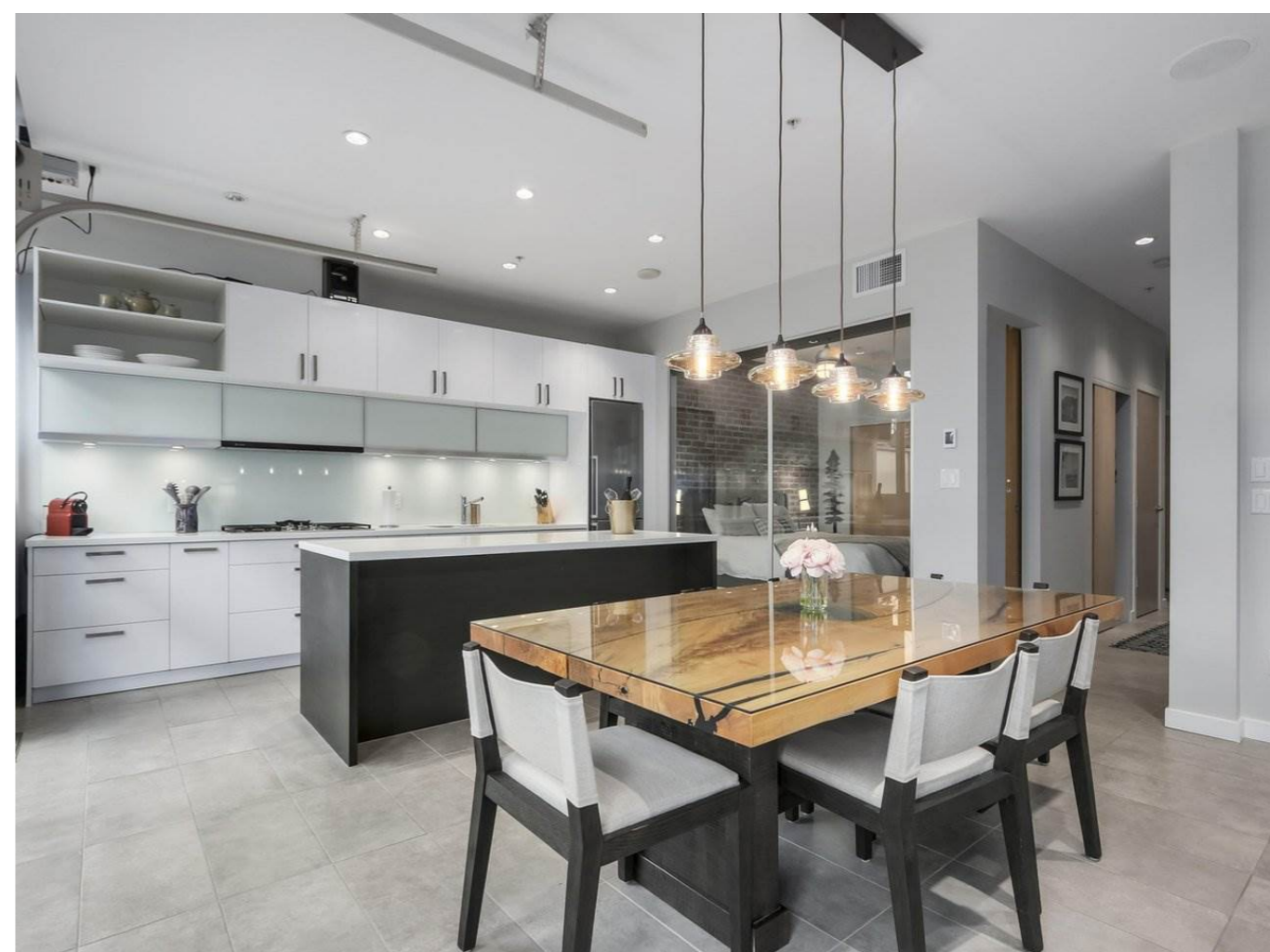


## a turn key solution the MLS revisited

mycondoplans seamlessly integrates with any MLS, including Flex, Matrix, Paragon and Navicat, whether shared or individual.

Our floor plans are automatically matched with MLS listings, and accessible via Smart Link.

In addition, mycondoplans may be accessed from any MLS with a Clarity Dashboard.



## a smarter search

new credentials not required

With their MLS user ID and Password, members are automatically able to log into [mycondoplans.com](https://mycondoplans.com), and search for any property.

Our Smart Search allows users to easily find what they're looking for via Complex Name, Address, or even Listing ID, and results can be quickly filtered by any number of criteria.





**STATS**

historical graphs,  
inventory, recent  
sales

**AVM**

automated  
valuations based  
on market  
information and  
unit attributes

**LEADS**

qualified leads  
sent to registered  
agents

**FLOOR  
PLANS**

**MSGS**

direct messaging  
between registered  
agents

**DOCS**

declaration and  
covenant

## so much more a competitive edge

Our floor plan database is at the core of a suite of property services available to mycondoplans customers.

Market and Building Statistics, Condo Documents, Lead Generation and Messaging, together with our Automated Valuation Model, round out a set of professional decision making tools, specifically designed for realtors.

# florida coverage

Access to the floor plan database and MLS Listings for all counties listed below.

*Nassau*  
*Duval*  
*Clay*  
*Saint Johns*  
*Flagler*  
*Volusia*  
*Pasco*  
*Pinellas*  
*Hillsborough*  
*St Lucie*  
*Martin*  
*Palm Beach*  
*Broward*  
*Miami-Dade*

